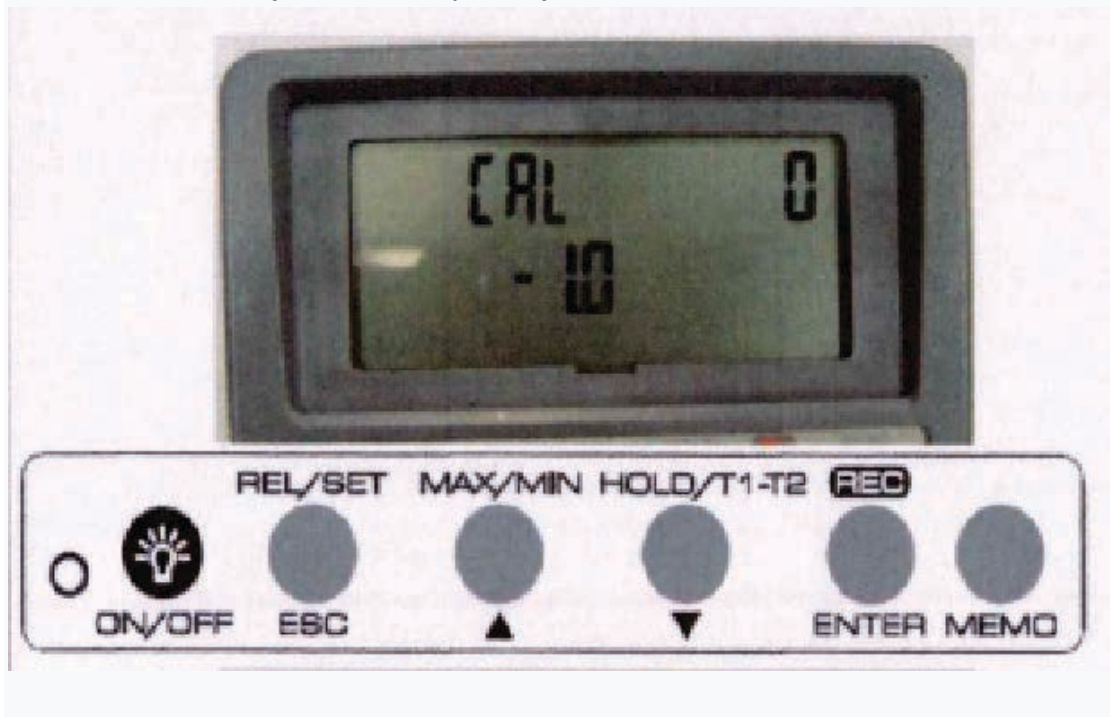


Procedure of Calibration for 88598

1. Set up 9V battery to 88598 firstly.
2. Connect FLUKE AM-011 and 88598 L1 Type via cable.



3. Set FLUKE AM-011 output is 0mV, then press [ON/OFF] + [REL/SET] + [MEMO] key simultaneously, then enter calibration mode, the [0] will be blinking in LCD of upper right corner.
4. The [0] will stop to blinking in LCD of upper right corner after few ten second. (See Below photo)



5. Set FLUKE AM-011 output is 57mV, than press [Max/Man] Key, the [57] will blinking in LCD of upper right corner.



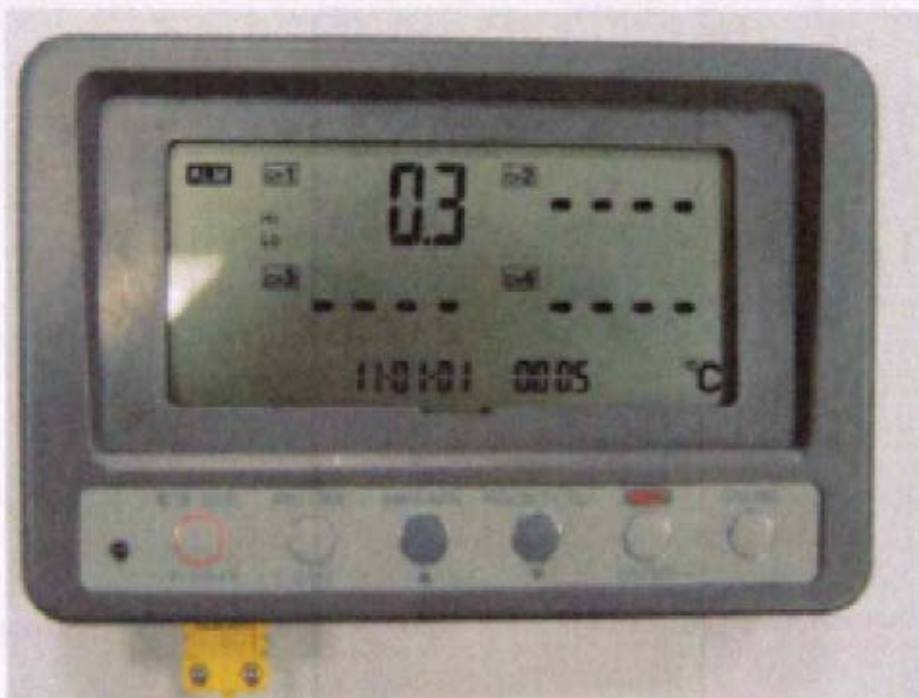
6. The [57] will stop to blinking in LCD of upper right corner after few ten second. The CAL is completed, than the meter will move to Measure Mode and CH1 will display E3 and red LED will blinking and ALM is on.



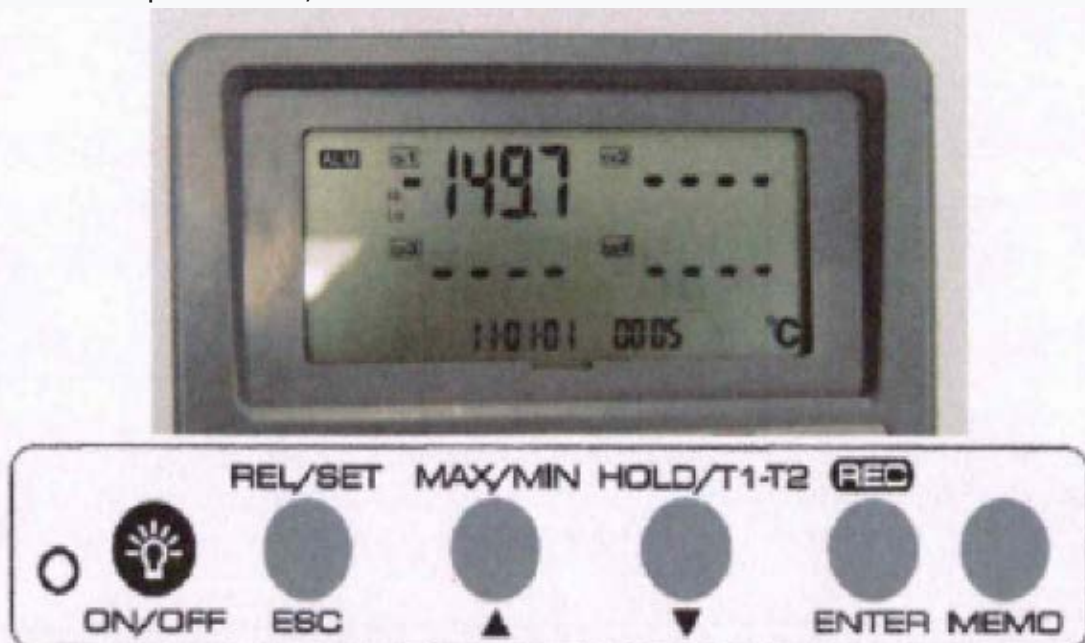
(See Below photo)

- Put K- Thermocouple connect to 88598 CH1 and other connect FULKE AM-011
- Press [ON/OFF] key to switch on meter, than use FLUKE AM-011 input below

Input 0C, Shown $0 \pm 0.1C$



Input -150C, Shown $-150 \pm 0.1C$



Input 1350C, Shown $1350 \pm 0.1C$



9. Press [ON/OFF] switch off the meter.