



Laboratory Equipment Manufacturer
www.mrclab.com



Mini Roller-ROL-01U

User's Manual



PLEASE READ THIS MANUAL CAREFULLY BEFORE OPERATION

3, Hagavish st. Israel 58817 Tel: 972 3 5595252, Fax: 972 3 5594529 mrc@mrclab.com

MRC. 5.20

Index

Introduction. 1

Cautions for Usage. 1

Disposal and Recycling Information. 2

Receiving and Inspection. 2

Installation. 3

Overview. 6

Operation. 7

Troubleshooting. 8

Packing List. 8

Warranty Card. 9

Introduction

Thank you for choosing MRC’s product. This product can be used in a variety of laboratory fields and work with different sized tubes.

Before you use the unit, please read this entire manual carefully to understand how to operate, and maintain. Your satisfaction with the unit will be maximized because of your increased understanding this instrument operation.

Keep this manual on-hand so it can be used by all operators of the unit. Be sure all operators of the unit are given appropriate training before you put the unit in service.

Cautions for Usage

1. Be sure you follow any city, county, or other ordinances in your area regarding the use of this unit.
2. Use only approved accessories. Do not modify system components. Any alternations or modifications to your machine may be dangerous and will void your warranty.
3. Do not modify the power cord provided with the unit. If the plug does not fit an outlet, have a proper outlet installed by a qualified electrician.
4. Please only use the enclosed power supply adaptor to supply the unit.
5. Place the unit on level and sturdy surface to avoid vibration and noise.
6. Please use the unit in specified environment.
7. DO NOT move the unit while in operation.
8. DO NOT use flammable, volatile liquids or operate this unit under hazardous conditions.

Receiving and Inspection

Your satisfaction and safety require a complete understanding of this unit, including its proper function and operational characteristics. Be sure operators are given adequate training before attempting to put the unit in service.

- 1. Inspection:** The carrier, when accepting shipment, also accept responsibility for safe delivery and is liable for loss or damage claims. On delivery, inspect for visible exterior damage, note and describe on the freight bill any damage found and enter your claim on the form supplied by the carrier.
- 2. Inspect for concealed loss or damage on the unit itself.** If any, the carrier will arrange for official inspection to substantiate your claim. Save the shipping crate until you are sure the unit has been delivered in good condition.
- 3. Return Shipment:** If for any reason you must return the unit, contact your customer service representative for authorization and supply nameplate data.
- 4. Accessories:** Make sure that all of the accessories indicated on the packing list is included with the unit. Carefully check all packaging before discarding. If there are any damaged or missing items, please contact your dealer.

Disposal and Recycling Information



The symbol shown to the left indicates that this product shall not be treated as household waste. In line with EU Directive 2012/19/EU for waste electrical and electronic equipment (WEEE), this electrical product must not be disposed of as unsorted municipal waste.

Please dispose of this product by returning it to the point of sale or to your local municipal collection point for recycling.

Installation

1. Control box installation (skip this step for ROL-02U series)

This unit is equipped with a separate control box (optional). Please fasten the nut on the connection plug of control box to the unit.

NOTE: Keys on the panel of the unit will become invalid when control box is connected. One control box controls one unit only.

2. Roller bars removal and installation

Roller bars can be removed and installed for different sized tubes.

2.1 Roller bars removal

Turn the knob counterclockwise to be loose on the unit end (see Fig-1) and then lift the locking metal arm as shown in fig- 2. And remove it. Press the sheet metal to the original position and clockwise twist the knob for fastening.

2.2 Roller bars installation

Turn the knob counterclockwise to be loose on the unit end (see Fig-1) and then uplift the pressure sheet-metal. Aim Hexagon Hole of roller at Hexagon shaft of the unit and press the other head into semicircle orifice. Press the sheet metal to the knob position and clockwise twist the knob for fastening.

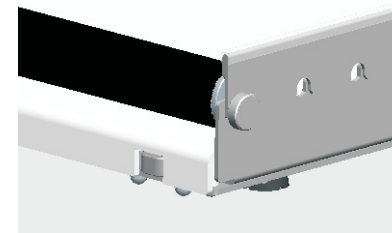


Fig-1

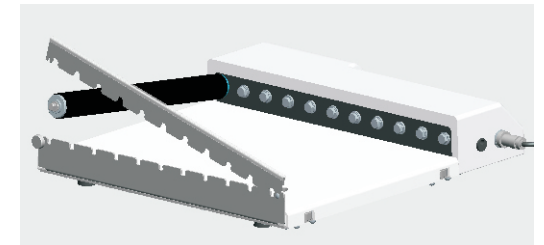


Fig-2

3. Rocking roller bars removing and installation

3.1 Rocking roller bars removing

The way of removing the rocking roller bars is the same as the way of removing the roller bars.(see 2.1)

3.2 Rocking roller bars installation

Counterclockwise twist the knob to be loose on the unit end(see Fig-1)and then uplift the pressure sheet-metal. Place the hexagon hole of the roller at the hexagon shaft of the unit and press the other head into semicircle orifice.After installing the first rocking roller

bar, you should rotate it as the direction of Fig-2. Stop and keep it when seeing that the notch in the rocking roller bar is aligning at the red line in the machine casing (see Fig-3). And then you can install the other rocking roller bars. When installing the other rocking roller bars, please insure that all of the notch in the rocking roller bar is aligned at the red line in the machine casing. Press the sheet metal to the knob position and clockwise twist the knob for fastening.

Note: Rocking roller bar and common roller bar can be installed in one machine. But you should space a roller between the rocking roller bar and the common roller bar.



Fig-3

4. O-Rings

When rolling test tubes, tubes may roll off the bars due to the larger outer diameter of the tube cap. Please place o-rings on the other end of the tube (see Fig-3) to prevent the tube from falling. (Two o-rings for each tube are recommended.)

When using the rocking roller bars, you should not use the O-ring. And please place the test tube according to Fig-5.



Fig-4

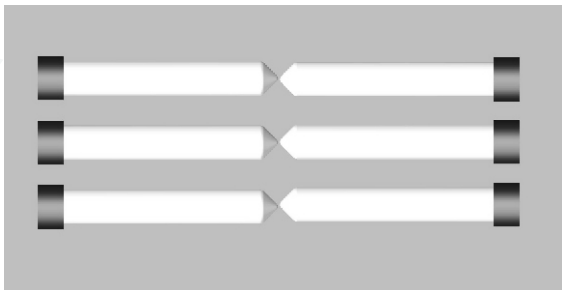


Fig-5

5. Installation for stacked units (ROL-01U and ROL-03U series model only)

For stacking two units, optional accessories are necessary.

The two units can be stacked together.

A. Unscrew the inner hexagon screw on the bottom of the unit, pull the round head of the inner hexagon screw out as the arrow direction (see Fig-6) until a support base is pulled out (see Fig-7), then fasten the inner hexagon screw. Repeat step A for other three support bases to be extended.

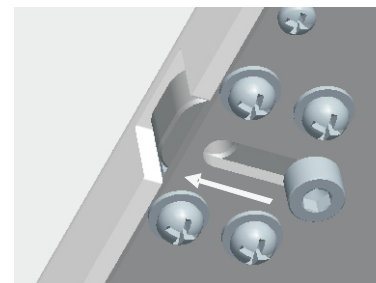


Fig-6

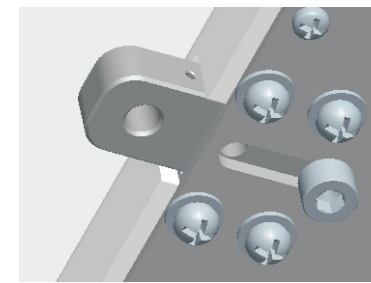


Fig-7

B. Locate the four stainless pillars in the stacking accessories. Screw the head with the M5 screw thread into extended support base in Step A (see Fig-8).

C. Screw the other head with M4 screw thread into support base hole of the stacked unit and fasten the knob (see Fig-9). Repeat Step C to remaining three support bases (see Fig-10).

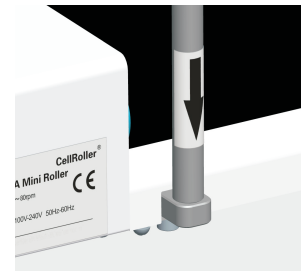


Fig-8



Fig-9



Fig-10

Overview

【Features】

- Wide speed range: 0.5-80 rpm
- Timing function (control box connected)
- Remote control (control box connected)
- Stackable function

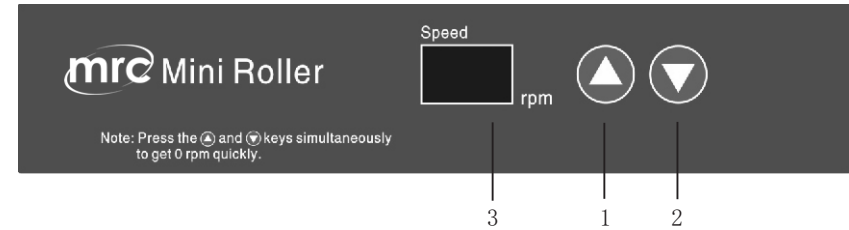
【Specifications】

Product Name	Stackable Mini Roller	Standard Mini Roller	Rocking Mini Roller
Roller Bars	6(Optional 11)		Optional
Rocking Roller Bars			11
Speed	0.5~80rpm		
Roller Bars Dimensions	Ø28mmX259mm		
Swing of Roller Bars			18mm
Available Tubes or Bottles	Max. Ø120mm bottles; tubes		
Dimensions (W×D×H)	360mmX402mmX72mm		
Timer	0~999min or continuous run		
Max. Load	6.5Kg(With machine)		
Max. Power	10W		
Ambient Temperature	4°C~60°C		
Relative Humidity	≤95%		
Net Weight	6.5Kg		
Stacking Function	Optional	NA	Optional
Power Supply	AC100~240V, 50/60Hz		
Certifications	CE, RoHS, WEEE, cCSAus		

	Model	Plug
Stackable Mini Roller	ROL-01UA (HYQ-2240A)	US
	ROL-01UW (HYQ-2240W)	E-EN-AU
	ROL-01USA (HYQ-2240SA)	SA
Standard Mini Roller	ROL-02UA (HYQ-2241A)	US
	ROL-02UW (HYQ-2241W)	E-EN-AU
	ROL-02USA (HYQ-2241SA)	SA
Rocking Mini Roller	ROL-03UA	US
	ROL-03UW	E-EN-AU
	ROL-03USA	SA

Operation

【Interface instruction】

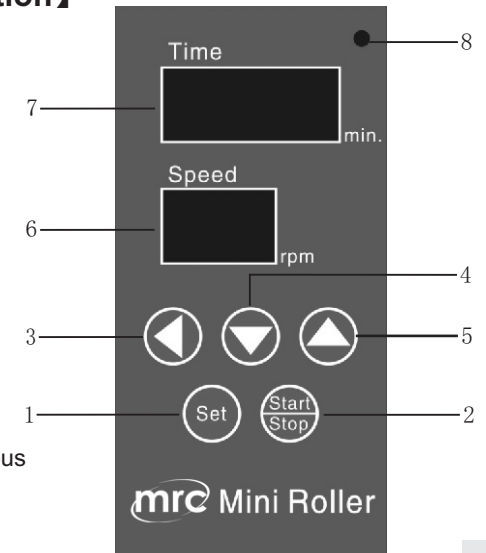


- ▲: To increase value of roller speed.
- ▼: To decrease value of roller speed.
- Speed display: Show current speed of roller.

The speed of the Mini Roller will drop to 0 RPM when the down arrow key and up arrow key are pressed simultaneously.

【Control box (optional) instruction】

- To set value of time and speed.
- To start or stop the unit.
- To move the cursor.
- To decrease value. Hold for 3 seconds to quickly decrease the value.
- To increase value. Hold for 3 seconds to quickly increase the value.
- To display current speed of roller.
- Displays remaining hours. When it reads "00", Continuous working Mode is activated. NOTE: Timing function is deactivated when the unit is in continuous working Mode.
- Power indicator.



Troubleshooting

Error	Cause	Solution
Unit does start	Power cable not connected	Check that power cable is firmly plugged into wall outlet.
	Power Supply	Check that cable is correctly installed into the unit
	Control box has been connected	Remote control box from unit
No display	Power failure	Ensure unit is powered on
	Time cycle completed	Repeat run
LED light on, unit not working	Overloaded	Check and repeat run
Not-responsive keypad	Control box is connected	Remote control box

Packing List

List	Qty	Model			Remark
		ROL-01U Series Stackable Mini Roller	ROL-02U Series Standard Mini Roller	ROL-03U Series Rocking Mini Roller	
Machine	1	1	1	1	
Roller bars	6 (Optional 11)	6 (Optional 11)			
Rocking roller bars			11		
Control box	1		Optional (1)	1	
Power cables	1	1	1	1	
Manual	1	1	1	1	
O-Ring (23.7X4.1mm)	20	20	20	20	
O-Ring (13.8X3.1mm)	20	20	20	20	
Stacking Accessories (Optional)	Stacking Rods	Optional (4)		Optional (4)	
	Knob	Optional (4)		Optional (4)	
	Allen Wrench	Optional (1)		Optional (1)	

WARRANTY CARD

Save this card carefully please. When you need service, contact the service company with card & invoice.

Warranty Card

User Name		Telephone	
Address			
Zip Code		E-mail	
Product Name		Model	
Serial number		Purchase Date	

- Warranty Scope:
 1. Warranty period is 24 Months from purchase date.
- Warranty is not valid under the following circumstances:
 1. Warranty term is expired.
 2. Damage due to improper use, maintenance or handling.
 3. Unmatched serial numbers, or modification of serial numbers.

Customer service hotline: 972-3-5595252
User: the above information should be completed by the seller.

Maintenance records

The following should be completed by maintenance staff.

First	Name of service		Maintenance date	
	Address		Telephone	
	Maintenance sheet number		Maintenance staff signature	
Second	Name of service		Maintenance date	
	Address		Telephone	
	Maintenance sheet number		Maintenance staff signature	
Third	Name of service		Maintenance date	
	Address		Telephone	
	Maintenance sheet number		Maintenance staff signature	