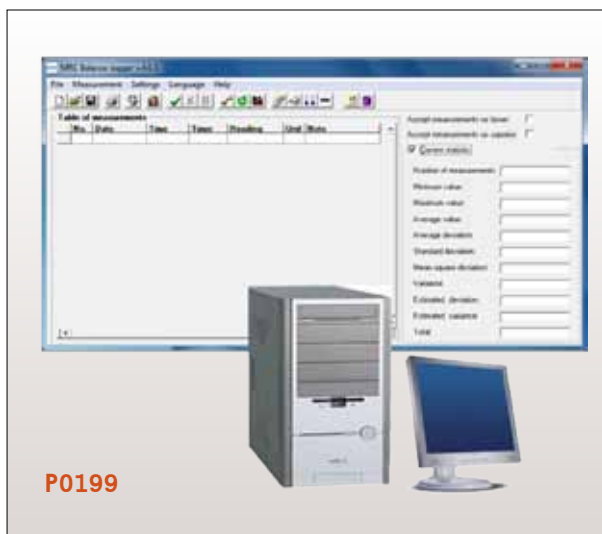


B BALANCES

P0199, Computer Software



P0199

P0199 software is designed for collecting measurement data from MRC weighing instruments & its statistics process.

Designed for scales:

- With standard communication frame.

Functions:

- Readout from instrument, record from measurements and saving data to a file
- Possibility of manual & auto registration of measurements
- Registration & storing of measurement data in a form of file
- Visualization of measurements data in a form of graph
- Static processing of measurement data
- Possibility of creating data from chosen measuring session
- Printout of measuring data, graphs and statistics
- Mainly used in laboratories.

Computer requirements:

- processor 1,2 GHz
- free 500 MB on hard drive
- RAM 256 MB (recommended 512 MB)
- operation system Windows 2000/XP
- Language versions: German/English/French.

BBA, BBB, BB Compact Balances



BBA-600

OP-01
Carrying Case

Multi weighing units

- g** Gram
- lb** Pound(av)
- oz** Ounce(av)
- ozt** Troy ounce
- dwt** Pennyweight
- GN** Grain
- ct** Carat
- tl** Tael TW
- tl^H** Tael HK
- tl^{HJ}** Tael Jewel
- tl^A** Tola-Anna
- tl^M** Tola-Masha
- mm** Momme



BB-3100



Features:

- **Fast and stable weighing**
High quality AD converter offers fast and stable weighing.
- **Multi selectable weighing units**
– g, lb, oz, ozt, dwt, GN, ct, tl, tl^H, tl^{HJ}, tl^M, tl^A, mm.
- **Piece counting and percentage functions**
- **Comparator (Hi/Lo) function**
- **Bright and distinct LCD display**
Large-sized bright LCD Display with 17 mm height digits.
- **Battery powered and auto-off timer**
Advanced software for battery saving, rechargeable battery, low battery indication.
- **Leveling feet and level bubble**
for accurate weighing
- **Portable-compact size, light weight, rugged body**
- **Stainless steel weighing pan.**

Model	BBA-600	BBA-1200	BB-1550	BB-3100
Capacity x Division(g)	600x0.01	1200x0.02	1500x0.05	3000x0.1
Pan size	118Φ		180mm x 140mm	
Display Type	6 segment LCD with backlight			
Dimension	185(W) x 211(D) x 59(H) mm			
Admissible Ambient Temp.	0°C ~ 40°C, RH<85%			
Weight	1.5kg			
Power	AC adapter (9V/500mA) or Re-chargeable battery (6V)			
Standard Accessories	Manual , AC/DC (9V) adapter			
Options	OP-01 Carrying case ; OP-02 Under hook			